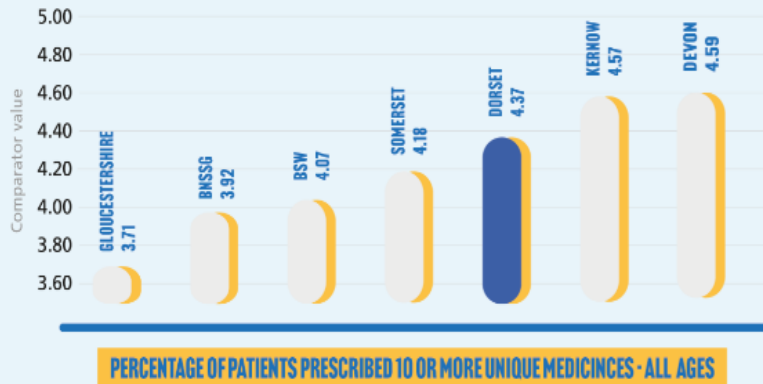
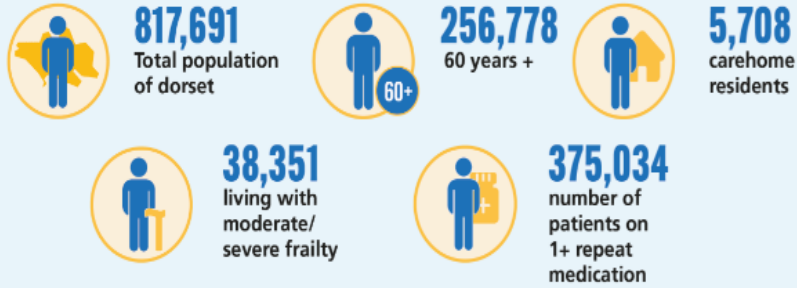


THE SIZE OF THE POLYPHARMACY PROBLEM 2022

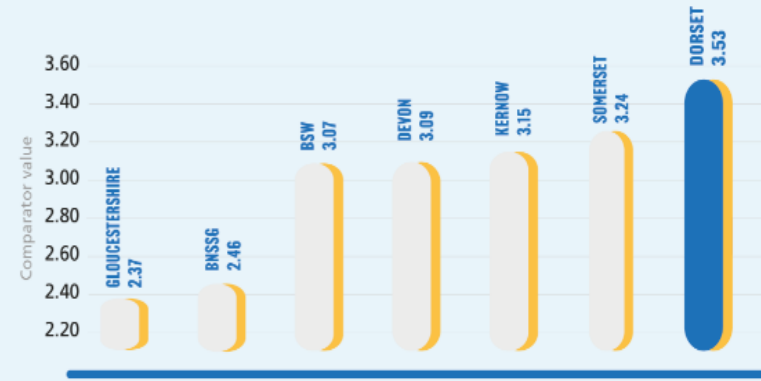
The World Health Organisation has highlighted the suboptimal use of medicines as a major problem worldwide. It estimates that more than half of all medicines are prescribed, dispensed or sold inappropriately, and that half of all patients fail to take them correctly. Risks of not addressing polypharmacy include:

- ↗ INCREASED RISK OF HARM
- ↗ INCREASED RISK OF NON-ADHERANCE/MEDICINE ERROR
- ↗ INCREASED RISK OF HOSPITAL ADMISSION

THE DORSET STATISTICS

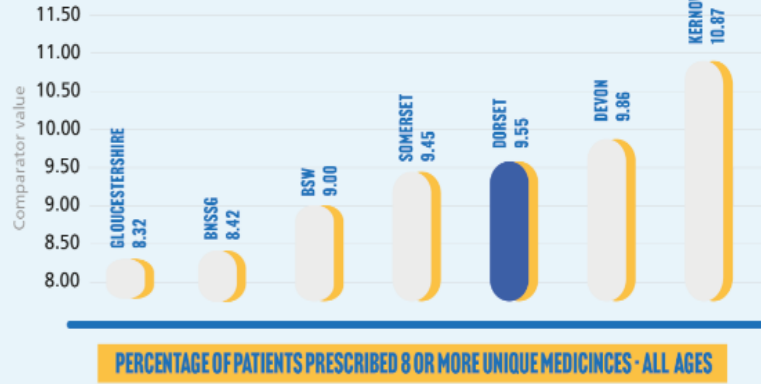


DORSET CCG highlighted within results for SOUTH WEST during Jan-22



PERCENTAGE OF PATIENTS PRESCRIBED A NSAID AND ONE OR MORE OTHER UNIQUE MEDICINES LIKELY TO CAUSE KIDNEY INJURY (DAMN MEDICINES) - ALL AGES

DORSET CCG highlighted within results for SOUTH WEST during Jan-22



PERCENTAGE OF PATIENTS PRESCRIBED 8 OR MORE UNIQUE MEDICINES - ALL AGES

DORSET CCG highlighted within results for SOUTH WEST during Jan-22



Top 5 Polypharmacy actions for clinicians

Always consider current indication/contraindication & dose for every patient on these top 5 medicine groups

- Anti-coagulants / platelets
- Opioids
- NSAIDs
- Diuretics
- ACB* drugs

*ACB =Anticholinergic Burden
<http://www.acbcalc.com/>