

SCHEDULE 2 – THE SERVICES

A. Service Specifications

Service Specification No.	02/GMS/0185
Service	Template biopsies at RBCHFT and DCHFT
Commissioner Lead	Planned and Specialist Clinical Delivery Group
Provider Lead	Service Delivery
Period	2015 / 16
Date of Review	As per Service Development and Improvement Plan

1. Population Needs

1.1 National/local context and evidence base

The prostate is a small gland near a man's bladder. A test to collect a sample of tissue may be needed when there are concerns about possible prostate cancer. Template transperineal biopsy involves the insertion of many fine needles through the skin between the scrotum and the anus in order to obtain tissue samples from the prostate for testing. The procedure is carried out with the patient under local or general anaesthesia.

Template transperineal biopsy should only be performed in the following circumstances:

1. where conventional TRUS fails to provide a definite diagnosis of prostate cancer
2. Patients with very high PSA who keep having repeated negative TRUS Biopsies.

NICE does not support this procedure for active surveillance or for mapping to identify the exact location of the prostate cancer and therefore procedures undertaken for these reasons will not be paid for by commissioners.

2. Outcomes

2.1 NHS Outcomes Framework Domains & Indicators

Domain 1	Preventing people from dying prematurely	X
Domain 2	Enhancing quality of life for people with long-term conditions	X
Domain 3	Helping people to recover from episodes of ill-health or following injury	X
Domain 4	Ensuring people have a positive experience of care	X
Domain 5	Treating and caring for people in safe environment and protecting them from avoidable harm	X

2.2 Local defined outcomes

Early diagnosis of prostate cancer

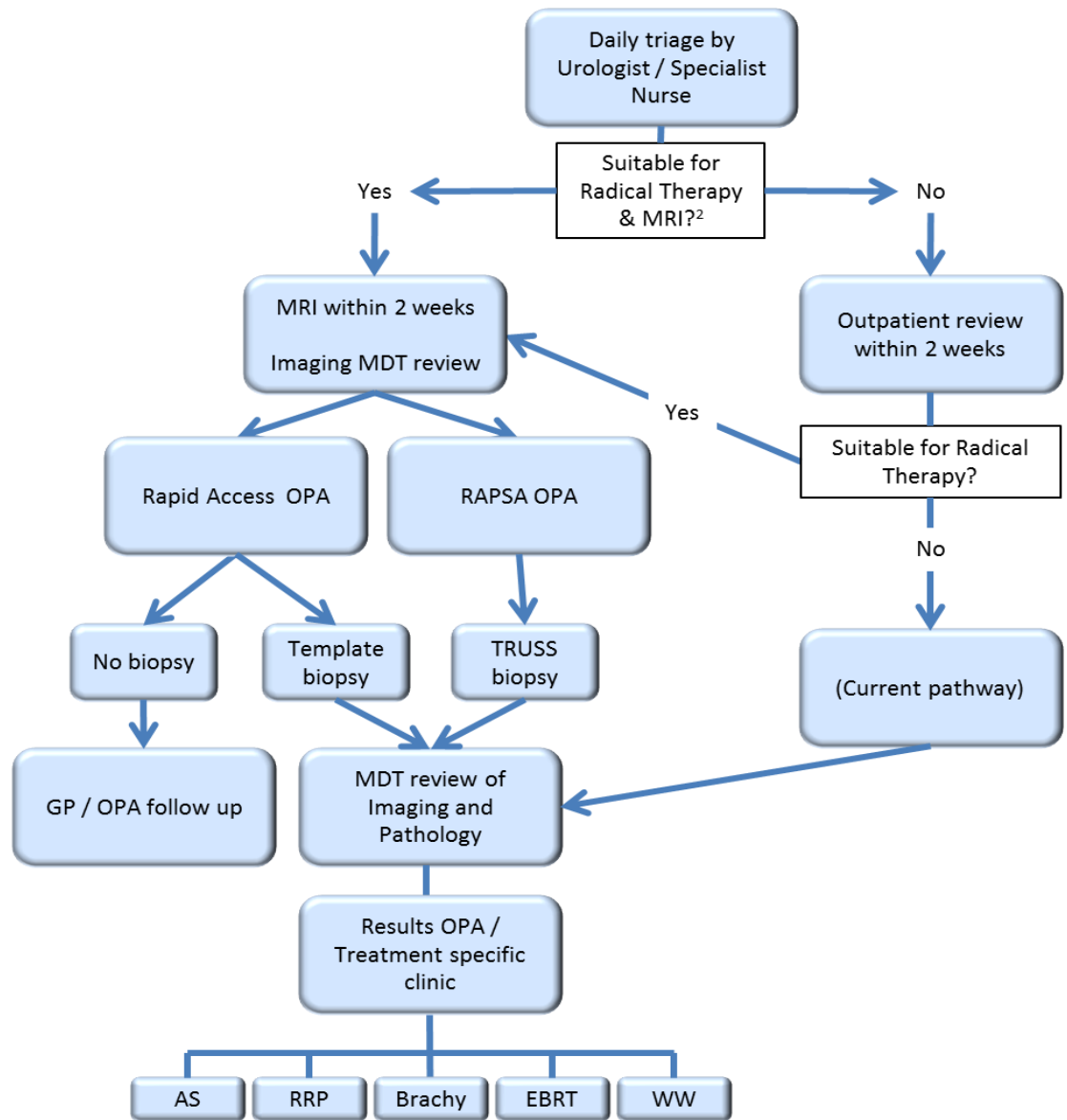
3. Scope

3.1 Aims and objectives of service

1. Undertake template biopsies as per agreed pathway
2. Ensure patients receive clear verbal and written information about the procedure
3. Ensure all potential patients are discussed at MDT
4. The patients GP will receive notification of the results of the biopsy

3.2 Service description/care pathway

Cancer Waiting Times – All Cancers 62 Day Referral To Treatment following GP / Screening Referral - Urology Pathway



3.3 Population Covered

Patient Choice

3.4 Any acceptance and exclusion criteria.

3.5 Interdependence with other services/providers

4. Applicable Service Standards

4.1 Applicable national standards (eg NICE)

4.2 Applicable standards set out in Guidance and/or issued by a competent body

(eg Royal Colleges)

4.3 Applicable local standards

Clinicians:

Clinicians wishing to perform template transperineal template biopsy of the prostate must:

1. Complete an approved certificated course of training and supervised practice
2. Must complete a minimum of 15 cases per year to maintain competence
3. Inform the Trust clinical governance leads they are a designated operator
4. Organisations offering this procedure must be submitting data to national prostate cancer audits
5. There must be a clear pathway to indicate where this procedure fits on the wider patient journey
6. Audit and review clinical outcomes of all patients having template transperineal template biopsy of the prostate (NHS and private)
7. An audit of the clinical outcomes must be submitted to the Planned and Specialist Clinical Delivery Group at six monthly periods

Pathology

1. All histopathology clinicians reporting on template biopsies must be using the EQA system
2. All histopathology on template biopsies will be reported on in a timely manner.

5. Applicable quality requirements and CQUIN goals

5.1 Applicable quality requirements (See Schedule 4 Parts A-D)

5.2 Applicable CQUIN goals (See Schedule 4 Part E)

6. Location of Provider Premises

The Provider's Premises are located at:

RBH and DCH

7. Individual Service User Placement