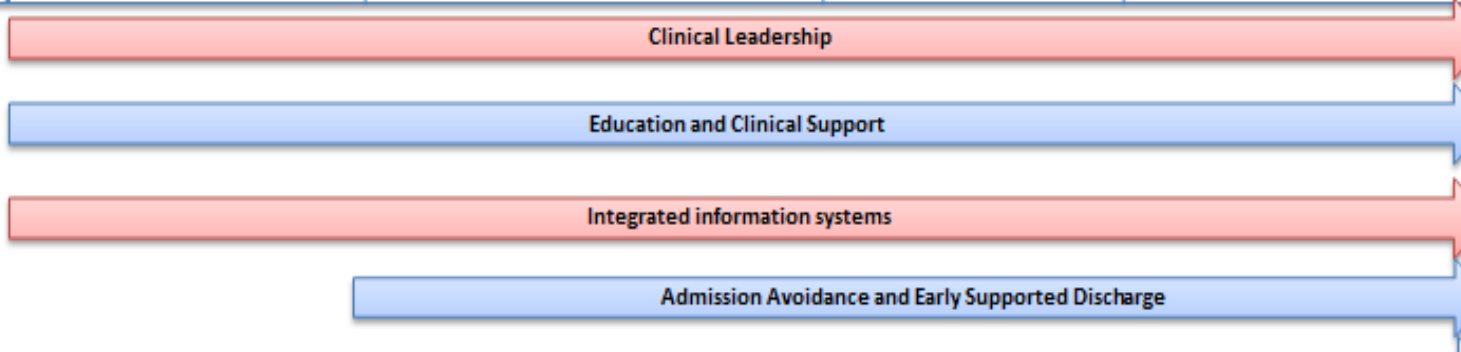


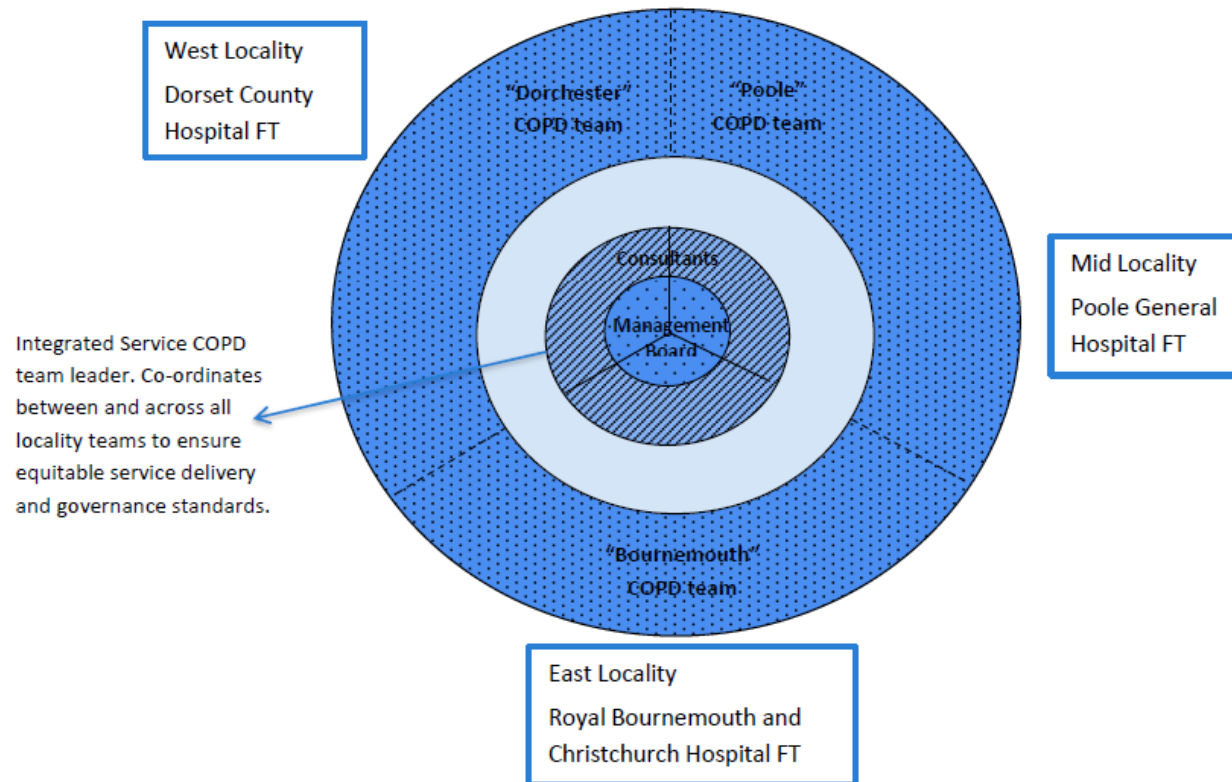
### Dorset Integrated Respiratory Service

Primary Prevention Tier 0	Primary Care Tier 1	Specialist Community Based Services Tier 2	Acute Care Tier 3	End of Life and Tertiary Care Tier 4
<ul style="list-style-type: none"> <li>• Primary prevention</li> <li>• Smoking Cessation:</li> <li>• Health Promotion : Publicity</li> <li>• Campaign Champions</li> <li>• Flu vaccinations</li> <li>• Availability and awareness</li> </ul>	<ul style="list-style-type: none"> <li>• Screen at risk populations for COPD</li> <li>• COPD register with risk stratification</li> <li>• Identified respiratory lead in each practice</li> <li>• All practitioners to use the COPD Pathway providing guidance on diagnosis, treatment and referral</li> <li>• Accurate diagnosis including spirometry</li> <li>• Holistic care plans including self-management and education</li> <li>• Skilled practitioners in spirometry and COPD management</li> <li>• Information about available support options</li> <li>• Regular review in primary care including post discharge follow up</li> </ul>	<ul style="list-style-type: none"> <li>• Respiratory training for staff in primary care, community care and nursing homes</li> <li>• Local link for specialist advice and education</li> <li>• Use of integrated communication tools of patient care record</li> <li>• Patient held records</li> <li>• Regular multidisciplinary and multiagency team meetings</li> <li>• Telephone access and support for patients and staff</li> <li>• Oxygen assessment and follow up service</li> <li>• Pulmonary rehabilitation and respiratory physiotherapy service</li> <li>• Integrated with IV antibiotic service</li> <li>• Telehealth monitoring for complex patients</li> <li>• Case management for high risk patients</li> <li>• Single point of access</li> <li>• Specialist clinic in the community</li> <li>• Telephone and e-mail advice from consultant</li> </ul>	<ul style="list-style-type: none"> <li>• Admission Avoidance through rapid intervention by specialist team integrated with community and social care teams</li> <li>• Early Supported Discharge with community teams</li> <li>• OOH advice accessible to patients and staff</li> <li>• Hospital Admission with discharge care bundle</li> </ul>	<ul style="list-style-type: none"> <li>• Multidisciplinary end of life support in the community</li> <li>• Advance care planning</li> <li>• Hospice care</li> <li>• Tertiary care including NIV and lung volume reduction surgery</li> </ul>





The proposed patient pathway:



Each Locality Team has respiratory nurse specialists, chest physiotherapy and support worker. Access to psychology / counselling

Each Locality Team provides: Admission avoidance, early supported discharge, oxygen and nebuliser assessments, community clinics and education/advice to primary and community care

Each Locality Team links with GP practices, Community nursing and therapy teams, pulmonary rehab providers, Smokestop and Breatheasy, in their locality

Management Board: The governing Body to oversee the Dorset Integrated Respiratory Service, with representatives from GP Locality Leads, consultants, Integrated Service Team leader, patient representatives, commissioning support

